



"...Centered in the home, the common culture of all women Has existed timelessly as the invisible kernel within all mainstream and indigenous cultures"

Daily Bread: The Culture of Women by Toni Truesdale



Divination



Woman with pots



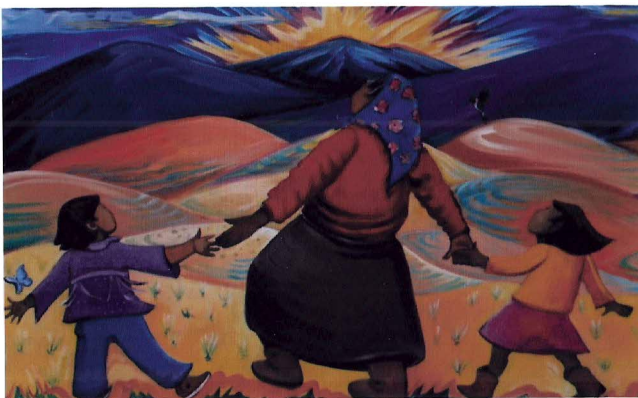
Singing Down the Moon



Women Mend the Earth



The Singers of Mt Ashigara



An Evening walk with Grandma

ToniTruesdale.com
trues@cybermesa.com



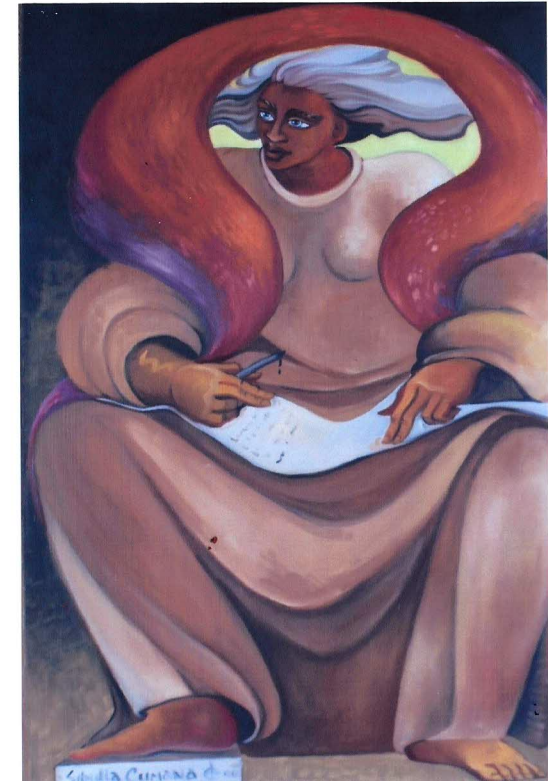
Candomble

Toni Truesdale has been a professional artist since her first exhibit at fifteen. Since then, she has developed images that reflect an interest in the common cultures of all peoples. The perspective of women is an important component for design and visualization. She has had many, one-women shows, participated in numerous group shows and published widely.

Truesdale uses all wet and dry media for painting and drawing. She also creates prints and is a mural artist. Some of her drawings are over 12 feet. Prints are available in several sizes, and art cards also.

Contact her at: Toni Truesdale,
P.O. Box 95, Pecos, NM 87552
email trues@cybermesa.com
Website: ToniTruesdale.com

Toni Truesdale
Artist/Educator/Muralist
Writer of Prose



The Sibyl of Cuma

"I like to depict the female side of both history a thology into a meaningful presence, with beauty. It is tant, as well, that the diversity of the world's tradit honored. The Indigenous hold the seeds of our tim world culture and show us our commonality. We are a family.

And, that we consider the Earth, Our Mother, and inhabitants in our choices ; so we will preserve the fu peace, balance and safety."

-Toni Truesdale